

α -tubulin Monoclonal Antibody

目录号: ANT328

规格: 50 μ l

储存: -20 $^{\circ}$ C/一年 (-20 $^{\circ}$ C 保存无需分装)

免疫原: Alpha Tubulin fusion protein Ag18034.

组成: PBS with 0.02% sodium azide and 50% glycerol pH 7.3.

来源: Mouse

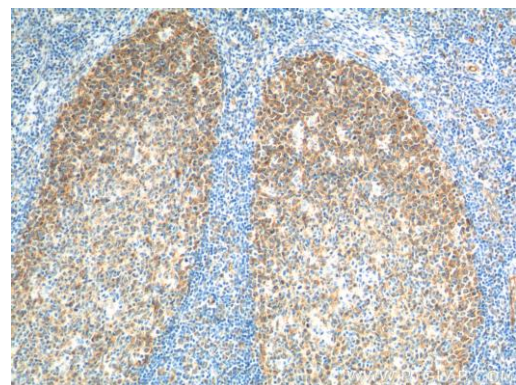
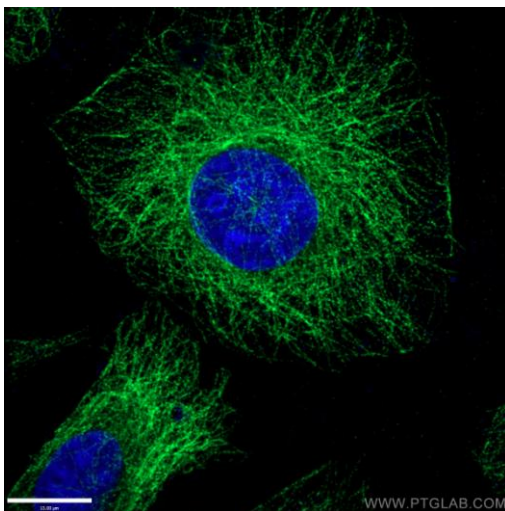
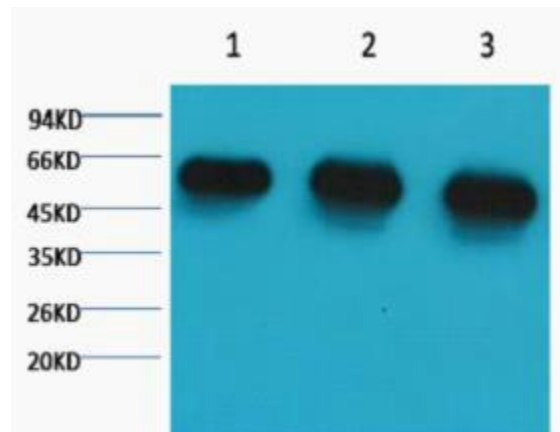
浓度: 1733 μ g/ml

反应种属: Human, Mouse, Rat, Canine

条带大小: 50-55KDa

稀释: WB: 1:20000-100000 IP: 0.5-4.0 μ g for IP and 1:500-1:2000 for WB IF 1:50-1:500 IHC
1:200-1:1000

为获得最佳实验效果, 请根据具体实验调整抗体最佳工作浓度。



相关产品:

ANT321 β -actin Antibody (Mab)

ANT322 β -actin Antibody (Pab)
ANT323 Plant actin Monoclonal Antibody (Mab)
ANT324 GAPDH Antibody (Mab)
ANT325 GAPDH Antibody (Pab)
ANT326 β -tubulin (Mab)
ANT327 β -tubulin (Pab)
ANT328 alpha-tubulin (Mab)
ANT329 alpha-tubulin (pab)
ANT330 Histone3 (Mab)
ANT331 Rabbit Mab Histone3
ANT332 PCNA (Mab)
ANT333 Rabbit Mab PCNA
ANT334 Lamin B1 (Mab)
ANT335 Lamin B1 (Pab)
ANT336 Rabbit Mab NaK ATPase
ANT337 Rabbit Mab COX IV
ANT338 Mouse Mab COX IV