

## Cyclophilin A(CyPA) Polyclonal Antibody

目录号: ANT340

规格: 50 $\mu$ l

储存: -20 $^{\circ}$ C/一年 (4 $^{\circ}$ C条件下可短期保存1-2周, 建议分装后储存, 避免反复冻融)

免疫原: The antiserum was produced against synthesized peptide derived from the Internal region of human PPIA. AA range:51-100

组成: Liquid in PBS containing 50% glycerol, 0.5% BSA and 0.02% sodium azide.

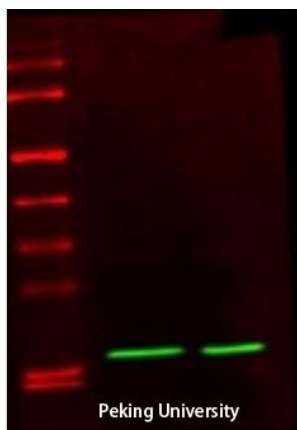
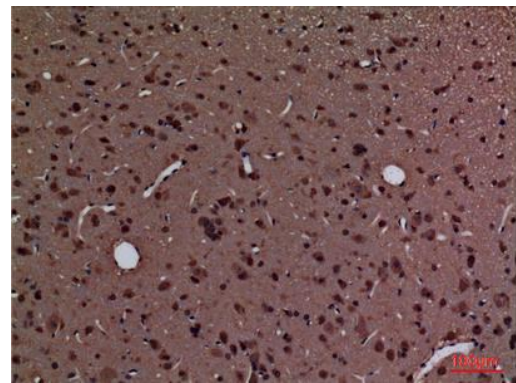
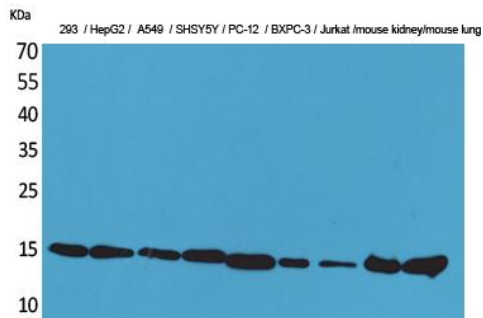
来源: Rabbit

反应种属: Human, Mouse, Rat

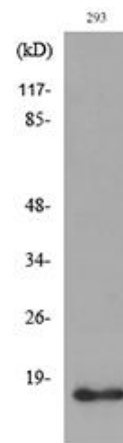
条带大小: 18KDa

稀释: Western Blot: 1/500 - 1/2000. IHC-p: 1:100-300 ELISA: 1/20000. Not yet tested in other applications.

为获得最佳实验效果, 请根据具体实验调整抗体最佳工作浓度。



Ppia



相关产品:

ANT321  $\beta$ -actin Antibody (Mab)

ANT322  $\beta$ -actin Antibody (Pab)

ANT323 Plant actin Monoclonal Antibody (Mab)

ANT324 GAPDH Antibody (Mab)

ANT325 GAPDH Antibody (Pab)  
ANT326  $\beta$ -tubulin (Mab)  
ANT327  $\beta$ -tubulin (Pab)  
ANT328 alpha-tubulin (Mab)  
ANT329 alpha-tubulin (pab)  
ANT330 Histone3 (Mab)  
ANT331 Rabbit Mab Histone3  
ANT332 PCNA (Mab)  
ANT333 Rabbit Mab PCNA  
ANT334 Lamin B1 (Mab)  
ANT335 Lamin B1 (Pab)  
ANT336 Rabbit Mab NaK ATPase  
ANT337 Rabbit Mab COX IV  
ANT338 Mouse Mab COX IV  
ANT339 Vinculin (Pab)  
ANT340 Cyclophilin A (Pab)  
ANT341 SDAH (Pab)  
ANT342 HSP60(Pab)