

α -Tubulin Monoclonal Antibody

目录号: ANT428

规格: 100 μ l

储存: -20 $^{\circ}$ C/一年

免疫原: Recombinant Protein of Tubulin alpha-1A chain

组成: Liquid in PBS containing 50% glycerol, 0.5% BSA and 0.02% sodium azide, pH 7.3.

来源: Mouse / IgG1

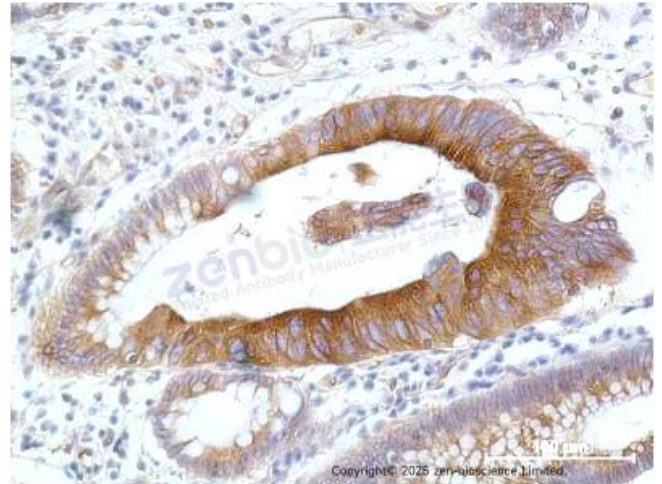
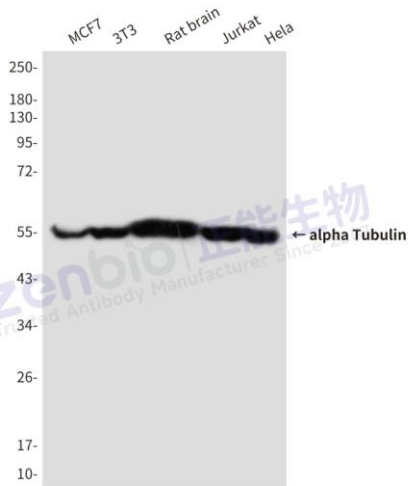
反应种属: Human, Mouse, Rat,

应用: WB IF/ICC IP IHC

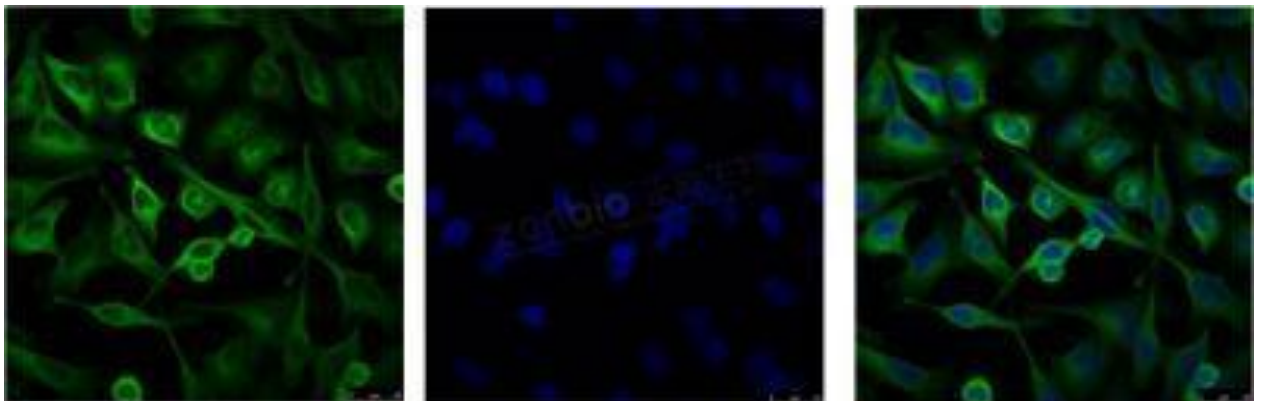
条带大小: Calculated MW: 50 kDa; Observed MW: 50 kDa

稀释: WB-1:500-1:1000; IHC-1:50-1:100; IF-1:50-1:200; IP-1:20

为获得最佳实验效果, 请根据具体实验调整抗体最佳工作浓度。



Copyright © 2025 zen-bioscience Limited.



相关产品:

ANT421 β -actin Antibody (Mab)

ANT422 β -actin Antibody (Rab)

ANT424 GAPDH Antibody (Mab)



ANT425 GAPDH Antibody (Rab)

ANT426 β -tubulin (Mab)

ANT427 β -tubulin (Rab)

ANT428 alpha-tubulin (Mab)

ANT429 alpha-tubulin (Rab)

武汉安特捷生物技术有限公司
www.antgene.com